



# Reenvisioning Illinois' Workforce System

Marriott Hotel and Conference Center, Normal Illinois

April 2022

***Drew Thomason***  
**KEB**

# Overview of Today

- Review what a WIOA State Plan does
- The recent WIOA Unified State Plan Modification
- Dialog around the workforce system that will inform the next state plan
- Stakeholder engagement around the development of the next state plan

**The WIOA Unified State Plan is the federal compliance document for the United States Departments of Labor and Education under the federal WIOA.**

**Illinois's WIOA Unified State Plan also outlines the Governor's vision for an integrated workforce, education and economic development policies and programs for the State of Illinois.**



# State Plan Modification

**Current State Plan was  
modified this year**

## Overview of modification

- Ongoing impacts of covid on labor market and job market
- Adjustments made to ensure success of 2020 State Plan

## Themes incorporated into the modification

- Ensuring an Equitable and Accessible Workforce System
- Increased Investment of State Dollars in the Workforce System
- Larger use of supportive and barrier reduction services
- Adaptability of the Workforce System





# QUESTION

**Are there any questions on the  
State Plan Modification?**



# Ongoing Dialog Around the Workforce System



## Ongoing Dialog Around Workforce

# Governor's Commission on Workforce Equity & Access

# Governor's Commission on Workforce Equity & Access

- Visible
- Welcoming
- Coordinated
- Human-Centered

## Governor's Commission on Workforce Equity & Access

- **Visible**
- **Welcoming**
- Coordinated
- Human-Centered

## Governor's Commission on Workforce Equity & Access

- Visible
- Welcoming
- **Coordinated**
- Human-Centered

## Governor's Commission on Workforce Equity & Access

- Visible
- Welcoming
- Coordinated
- **Human-Centered**



# Ongoing Dialog Around Workforce

## IWIB Equity Task Force



## IWIB Equity Task Force

- Build a culture of equity in the workforce system
- Integrate an equity lens into the work of the IWIB
- Invest in data capacity, tracking, and ability to identify disparities
- Diversify workforce leadership and staff and provide training around equity and cultural competence
- Provide funding to and partner organizations with a track record of cultural competence
- Prioritize workforce services that include supportive services

## IWIB Equity Task Force

- **Build a culture of equity in the workforce system**
- Integrate an equity lens into the work of the IWIB
- Invest in data capacity, tracking, and ability to identify disparities
- Diversify workforce leadership and staff and provide training around equity and cultural competence
- Provide funding to and partner organizations with a track record of cultural competence
- Prioritize workforce services that include supportive services

## IWIB Equity Task Force

- Build a culture of equity in the workforce system
- **Integrate an equity lens into the work of the IWIB**
- Invest in data capacity, tracking, and ability to identify disparities
- Diversify workforce leadership and staff and provide training around equity and cultural competence
- Provide funding to and partner organizations with a track record of cultural competence
- Prioritize workforce services that include supportive services

## IWIB Equity Task Force

- Build a culture of equity in the workforce system
- Integrate an equity lens into the work of the IWIB
- **Invest in data capacity, tracking, and ability to identify disparities**
- Diversify workforce leadership and staff and provide training around equity and cultural competence
- Provide funding to and partner organizations with a track record of cultural competence
- Prioritize workforce services that include supportive services

## IWIB Equity Task Force

- Build a culture of equity in the workforce system
- Integrate an equity lens into the work of the IWIB
- Invest in data capacity, tracking, and ability to identify disparities
- **Diversify workforce leadership and staff and provide training around equity and cultural competence**
- Provide funding to and partner organizations with a track record of cultural competence
- Prioritize workforce services that include supportive services

## IWIB Equity Task Force

- Build a culture of equity in the workforce system
- Integrate an equity lens into the work of the IWIB
- Invest in data capacity, tracking, and ability to identify disparities
- Diversify workforce leadership and staff and provide training around equity and cultural competence
- **Provide funding to and partner organizations with a track record of cultural competence**
- Prioritize workforce services that include supportive services

## IWIB Equity Task Force

- Build a culture of equity in the workforce system
- Integrate an equity lens into the work of the IWIB
- Invest in data capacity, tracking, and ability to identify disparities
- Diversify workforce leadership and staff and provide training around equity and cultural competence
- Provide funding to and partner organizations with a track record of cultural competence
- **Prioritize workforce services that include supportive services**

**Service Integration and Coordination  
across all workforce programs**



# Supporting and Utilizing Returning Citizens in the Labor Market

# Supporting Entrepreneurship

# Ensuring a Nimble and Responsive Workforce System



# QUESTION

**Are there themes or topics that you or others are discussing around the state's workforce system that should be considered?**

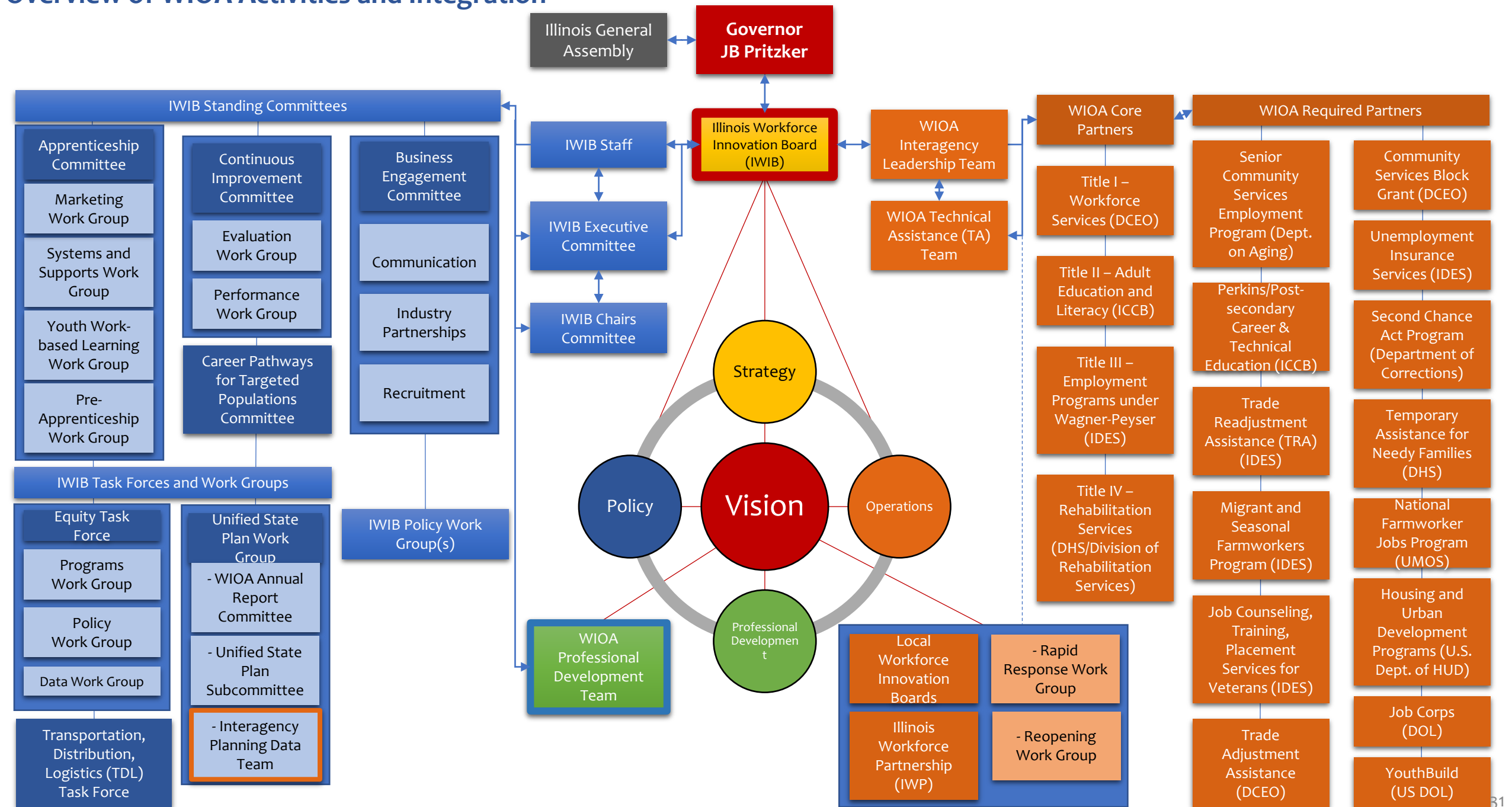
## **How stakeholder feedback informs the development of a state plan**

# The Framework for WIOA Activities and Integration

1. **(Red) Vision.** The lens of WIOA implementation efforts.
2. **(Yellow) Strategy.** Set the priorities and objectives to achieve the vision for Illinois' workforce development system.
3. **(Blue) Policy.** Developed through inclusive efforts to set clear expectations, requirements and procedures for operationalizing priorities.
4. **(Orange) Operations:** Operational plans to implement those strategies and policies with real commitments and resources. Those efforts are then maintained and adapted over time.
5. **(Green) Professional Development.** Works in tandem with operations to ensure stakeholders have the information, capacity and resources they need to effectively operationalize Illinois' vision, strategy, policies.



# Overview of WIOA Activities and Integration





# 2024-2028 State Plan Process

Key Activity	Date
Initial Stakeholder Engagement and Information Gathering	Summer 2022 – Fall 2022
Vision, Goals and Strategies Setting	Winter 2022/2023
Ongoing Stakeholder Engagement	Early 2023 – Winter 2023
Final Draft 2024 State Plan	December 2023
Public Comment and Feedback on Draft State Plan	January 2024
Incorporate public feedback into final 2024 State Plan	February 2024
Submit 2024 State Plan	March 2024





# 2024-2028 State Plan Process

Key Activity	Date
Initial Stakeholder Engagement and Information Gathering	Summer 2022 – Fall 2022
Vision, Goals and Strategies Setting	Winter 2022/2023
Ongoing Stakeholder Engagement	Early 2023 – Winter 2023
Final Draft 2024 State Plan	December 2023
Public Comment and Feedback on Draft State Plan	January 2024
Incorporate public feedback into final 2024 State Plan	February 2024
Submit 2024 State Plan	March 2024

**What does stakeholder engagement  
look like?**

- **WIOA Webinars**
- **Surveys**
- **Focus groups**
- **FAQs**

**WIOA**

**SUMMIT**

americanjobcenter®

## Question

**Are there any ways of engaging stakeholders around the workforce system that have been missed in the past?**



Drew Thomason  
[drewt@kebcpa.com](mailto:drewt@kebcpa.com)  
217 789 0960